

# New Stackable Collection

## At home. On the road. No compromises.

Featuring residential-quality performance, one-touch winterization, smart connectivity, quieter operation, and the largest dryer capacity available in an RV laundry system, the new Splendide Stackable Collection is designed specifically for North American RV living.



### RV Approved

- Residential-quality laundry performance with **RV-approved safety** and peace of mind.



### More Capacity

- A 21% larger washer and industry-leading dryer capacity mean **fewer loads and more convenience.**



### One-Touch Winterization

- Industry-first one-touch winterization for **easy, dependable cold-weather protection.**



### Smarter Controls

- Intuitive controls with smart connectivity and **remote monitoring.**



### Easier Maintenance

- Clean Filter LED and **larger front-access lint filter** for easier maintenance.



### Quieter Operation

- Auto-leveling and enhanced insulation for **quieter operation.**



## THE SPLENDIDE DIFFERENCE

- Built specifically for North American RVs
- Industry-leading dryer capacity
- One-Touch winterization
- US-based support backed by 40+ years of RV laundry expertise

# WASHER

## (WFL2500X)

|               |                   |
|---------------|-------------------|
| Description   | Front Load Washer |
| Cabinet Color | White             |
| Capacity      | 2.3 cu. ft.       |
| Maximum Spin  | 1200 rpm          |
| Drum          | Stainless Steel   |



### CONTROLS

|   |                      |
|---|----------------------|
| Description                                 | Digital, LED Display |
| Total Wash Cycle Settings                   | 15                   |
| Options (Touch controls)                    | 7                    |
| WiFi Connectivity / Remote Control <b>Δ</b> | Yes                  |
| Real time cycle status with time remaining  | Yes                  |

### KEY CYCLES / OPTIONS

|                             |     |
|-----------------------------|-----|
| Auto Winterization <b>Δ</b> | Yes |
| Tub Clean                   | Yes |
| Quick Wash                  | Yes |
| Heavy Soil                  | Yes |
| Steam                       | Yes |
| Extra Rinse                 | Yes |
| Fast + <b>Δ</b>             | Yes |
| Child Lock                  | Yes |

### TECHNICAL INFORMATION

|                                |                                     |
|--------------------------------|-------------------------------------|
| Dimensions (H x W x D) (in)    | 33 1/8" H<br>23 1/2" W<br>23 1/4" D |
| Depth w/Door Open (in)         | 40 7/8"                             |
| Weight / Shipping Weight (lbs) | 159 lbs. / 165 lbs.                 |
| Total Power (Amps) <b>Δ</b>    | 6amp                                |
| Volts / Frequency              | 120V / 60Hz                         |

### RV SAFETY / EFFICIENCY / INSTALLATION

|  |                          |
|--|--------------------------|
| cULus Approved for Closet Installations <b>Δ</b> | Yes                      |
| Meets RVIA 1192 Standards <b>Δ</b>               | Yes                      |
| Meets Energy Star Criteria                       | Yes                      |
| Door Hinge                                       | Left Side                |
| RV Drain Pan (optional)                          | Available, PI24 / PI22** |
| RV SecureFit Brackets (optional)                 | Available, MK01**        |

### WARRANTY

|   |                            |
|---|----------------------------|
| 1 Year RV Parts & Labor - extendable to 2 years (Marine applications: 1 Year Parts) | Yes, both Washer and Dryer |
|---|----------------------------|

**Δ Exclusive to Splendide**

\*\* Accessories sold separately

# DRYER

## (DV1725X)

|                                       |                   |
|---------------------------------------|-------------------|
| Description                           | 120V Vented Dryer |
| Cabinet Color                         | White             |
| Capacity                              | 4.0 cu. ft.       |
| Easy Clean Filter                     | Yes, Extra Large  |
| Bi-Directional Drum Rotation <b>Δ</b> | Yes               |



### CONTROLS

|   |                      |
|---|----------------------|
| Description                                 | Digital, LED Display |
| Total Dry Cycle Settings <b>Δ</b>           | 15                   |
| Options (Touch controls)                    | 7                    |
| WiFi Connectivity / Remote Control <b>Δ</b> | Yes                  |
| Real time cycle status with time remaining  | Yes                  |

### KEY CYCLES / OPTIONS

|   |     |
|---|-----|
| Opti-Sense Auto Dry Cycles <b>Δ</b>         | 13  |
| Dryness Levels (Damp to Extra Dry) <b>Δ</b> | Yes |
| Timed Dry Cycles (High/Low Heat)            | 2   |
| Air Fluff (Timed, No Heat)                  | Yes |
| Delicates                                   | Yes |
| Shirts Quick                                | Yes |
| Sanitize                                    | Yes |
| Child Lock                                  | Yes |

### TECHNICAL INFORMATION

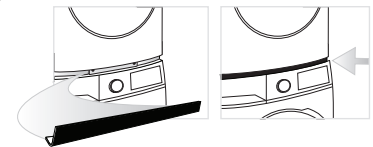
|  |   |
|--|---|
| Dimensions (H* x W x D) (in)                   | 33 3/8" H*<br>*66 5/8" H when stacked on washer<br>23 1/2" W<br>23 1/4" D |
| Product Depth w/Door Open (in)                 | 40 3/4" H (66 5/8" Stacked)   |
| Weight / Shipping Weight (lbs)                 | 70 lbs. / 77 lbs.   |
| Total Power (Amps)                             | 12.5amp*  |
| * 18.5 amp washer + dryer total power <b>Δ</b> |   |
| Volts / Frequency                              | 120V / 60Hz   |

### RV SAFETY / EFFICIENCY / INSTALLATION

|  |                     |
|--|---------------------|
| cULus Approved for Closet Installations <b>Δ</b> | Yes                 |
| Meets RVIA 1192 Standards <b>Δ</b>               | Yes                 |
| Door Hinge <b>Δ</b>                              | Reversible          |
| Custom RV Stack Kit (optional) <b>Δ</b>          | Available, SK04**   |
| SK04 Trim Kit Add-On (optional)                  | Available, SK04T ** |



For a seamless stacked look, combine the SK04 Stack Kit (left) with the SK04T Trim Kit (below)



© 2026 Westland Sales | Splendide® is a registered trademark of Westland Sales / Specifications and features subject to change without notice | www.splendide.com



Learn more, call Splendide at 1-800-356-0766 today.

NORTH AMERICA'S BEST-SELLING RV LAUNDRY APPLIANCE BRAND SINCE 1984



Scan to Explore

EXPLORE SPLENIDIE STACKABLES

- Product Features
- Installation Resources
- Support Documents